



MARK TUNSTALL
PROPERTY

THE LANSBURY

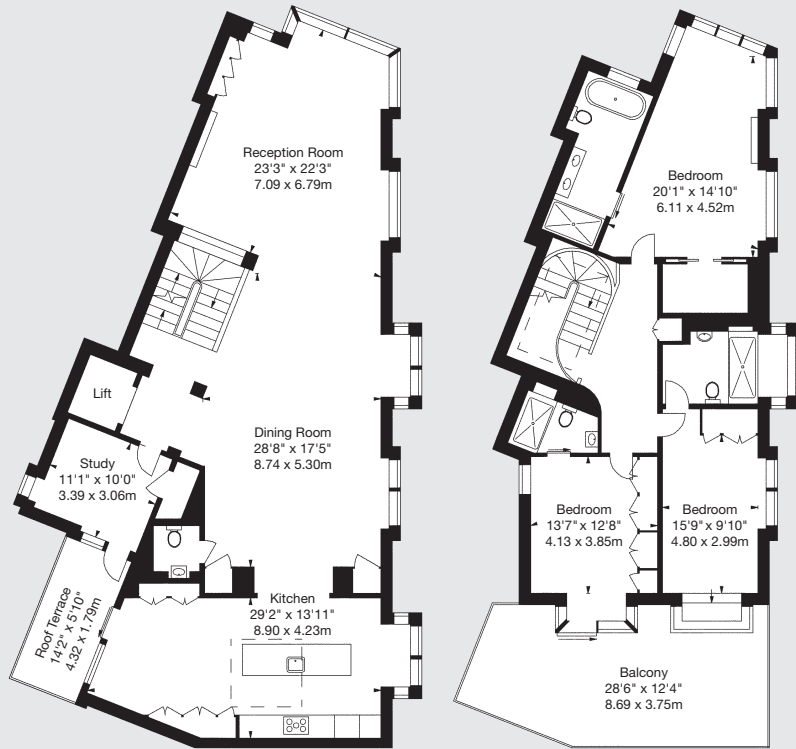
KNIGHTSBRIDGE SW3



**APPROX. GROSS
INTERNAL AREA**
2,986 SQ FT (277.4 SQ M)
(EXCLUDING LIFT)

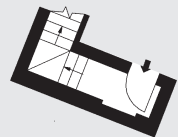


THIS FLOORPLAN IS FOR
GUIDANCE ONLY AND NOT FOR
VALUATION PURPOSES



FOURTH FLOOR

FIFTH FLOOR



**THIRD FLOOR
ENTRANCE**



An immaculate penthouse adjacent to Harrods occupying the fourth and fifth floors of an exclusive new development with concierge offering 2,986 sq ft (277 sq m) of three bedroom accommodation with direct lift access, air-cooling, underground parking and 377 sq ft (35 sq m) of private outdoor space.

The Lansbury is an exquisite boutique development of six new apartments designed with immense style and meticulous attention to bespoke detail by renowned international design and development firm Finchatton.

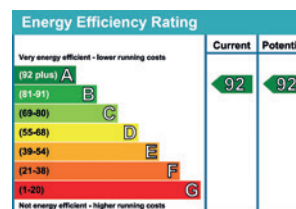
In the very heart of Knightsbridge, adjacent to Harrods, this exclusive new development is serviced by the award-winning Capital Hotel. Each apartment benefits from secure underground parking, 24hr security via monitored CCTV, air-conditioning, underfloor heating, Crestron home automation, an integrated audio-visual system and concierge service. Housekeeping and room service is also available.

Furnished

Local Authority: City of Westminster

Viewing strictly by appointment with Mark Tunstall Property

- 3 bedrooms
- 3 bathrooms
- Reception
- Eat-in kitchen
- Study
- Air-cooling
- 24 hour concierge
- Roof Terrace
- Underground parking



IMPORTANT NOTICE

THIS BROCHURE AND THE DESCRIPTIONS AND MEASUREMENTS HEREIN DO NOT CONSTITUTE REPRESENTATION AND WHILST EVERY EFFORT HAS BEEN MADE TO ENSURE ACCURACY, THIS CANNOT BE GUARANTEED. A COPY OF THE FULL ENERGY PERFORMANCE CERTIFICATE IS AVAILABLE UPON REQUEST. AUGUST 2017.

INFO@TUNSTALLPROPERTY.CO.UK
+44 (0)20 3011 1775